



Craftsman



Heritage

w/ Opt. Garage Door Upgrade



Traditional



Tudor

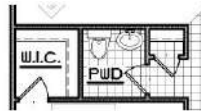
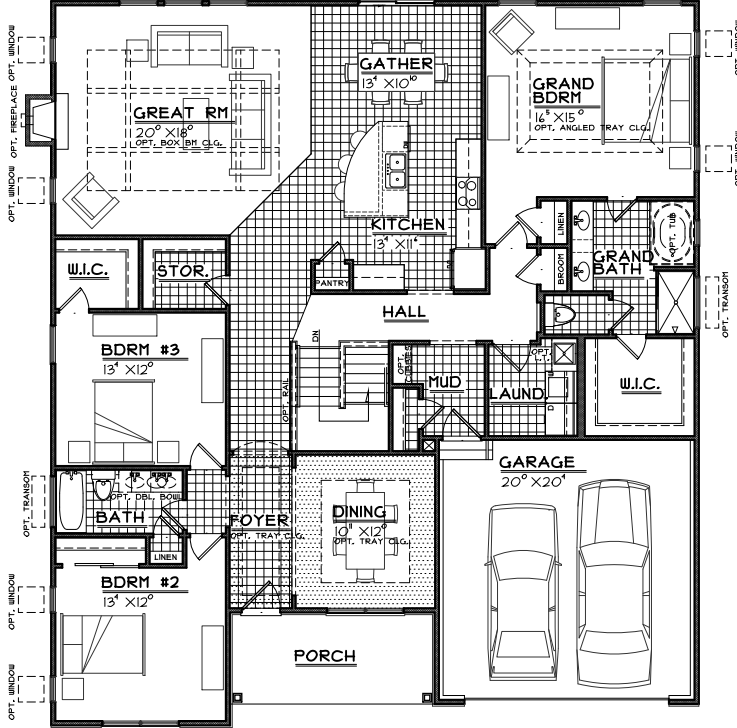
w/ Opt. Garage Door Upgrade



Traditional

w/ Optional Loft, Garage Door

FIRST FLOOR

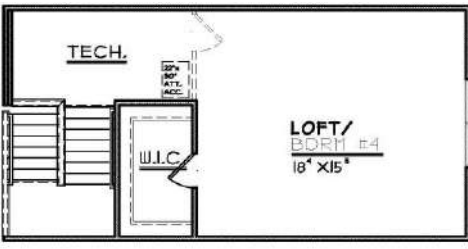


Optional Dck XYf Bath
ILO Storage Closet c ZZ
; fYUhFcca

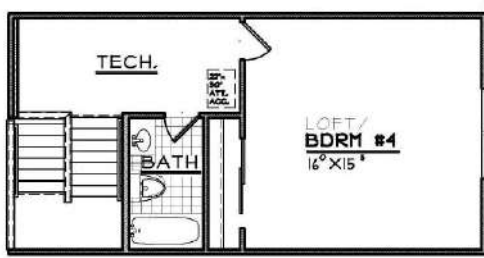
FIRST FLOOR FEATURES

- Includes 9 ft First Floor Ceiling
- Open Kitchen with Island Seating & Pantry
- Large Great Room, Opt. Fireplace, Opt. Ceiling Detail
- Opt. Powder Bath off Great Room
- Formal Dining Room or Opt. Study with Glass Doors
- 3 Bedrooms
- Grand Bedroom with Private Bath, Double Vanity, Walk-in Closet, Opt. Soaker Tub
- Mudroom with Coat Closet, Opt. Built-In Storage Cubbies
- First Floor Laundry Room with Opt. Laundry Sink, Opt. Door to Bedroom Closet
- Opt. Handrail and Wood Spindle Detail at Stair Wall
- Two Car Garage
- Opt. Third Car Garage

OPTIONAL LOFT



Loft with Walk-in Closet,
Tech Area

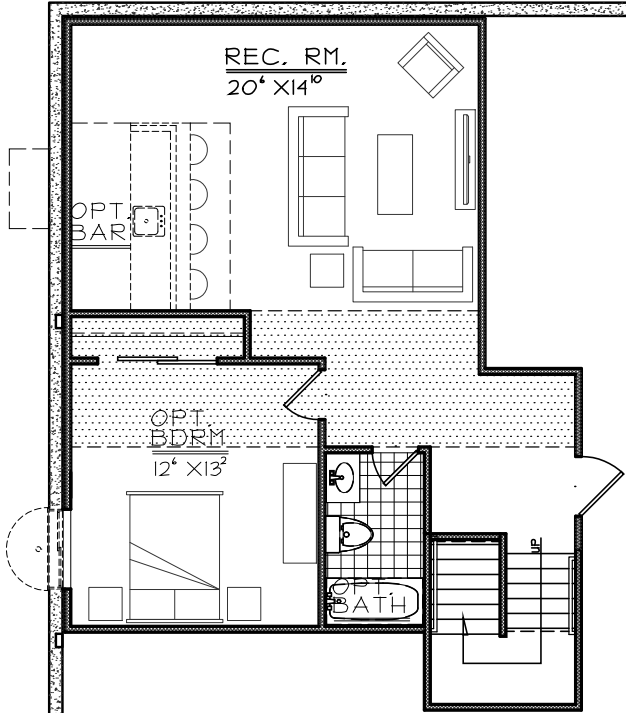


Optional Bedroom #4
with Closet, Optional Full
Bathroom, Tech Area

OPTIONAL LOFT FEATURES

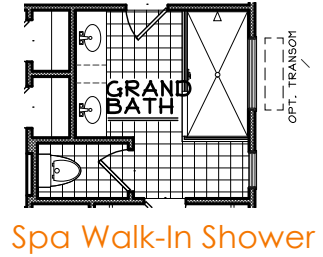
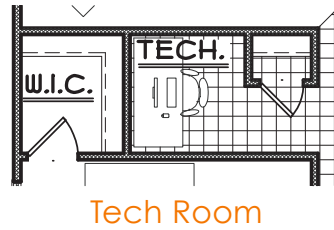
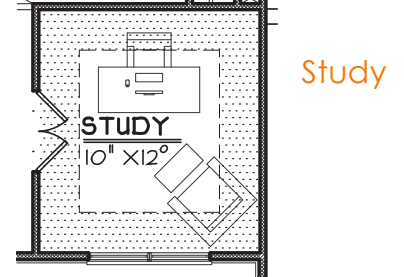
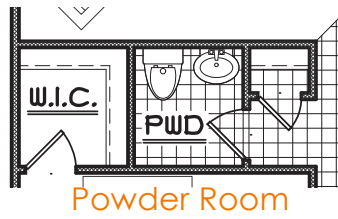
- Large Loft Area with Walk-in Closet
- Optional Bedroom Door Wall with Walk-in Closet
- Optional Full Bathroom

FINISHED LOWER LEVEL

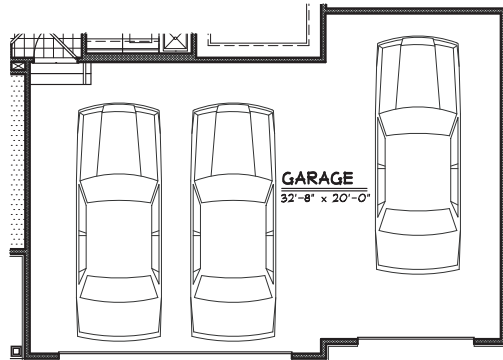
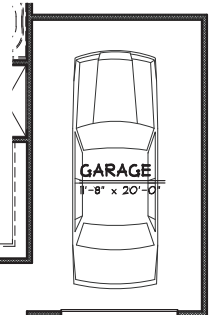
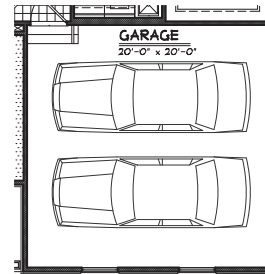


Opt. Finished Lower Level Media
Approx. 520 sq. ft.

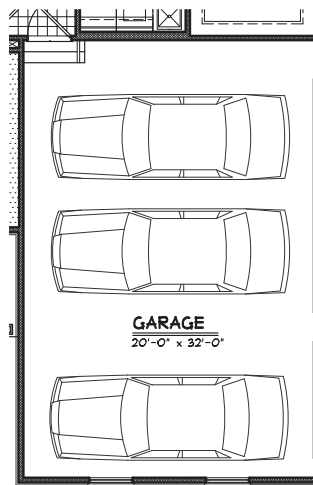
MAIN LEVEL



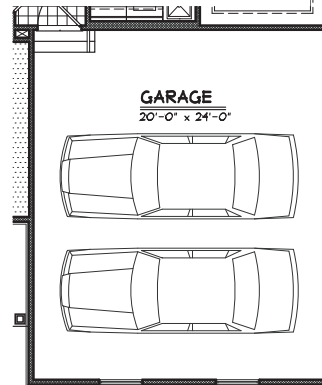
Two-Car
Side Entry



Three-Car Front Entry



Three-Car Side Entry



Three-Car Carriage



The CAROLINA REGAL COLLECTION

Approx. SQ. FT: 2,280 • 3 Bedrooms, 2 Baths

ADDITIONAL EXTERIOR ELEVATIONS



European w/ Opt. Stone Ledge



Olde Craftsman

For more information on this home, visit www.CristoHomes.com